

ANNUAL  
REPORT

2016

*"...I am the light of the world. Whoever follows me will never walk in darkness, but will have the light of life." - John 8:12*



# TABLE OF CONTENTS

3	Corporate Ideals
4	Social Goals & Strategic Directions
5	The LIGHT Journey So Far
6	Message of the Chairman
7	Message of the Executive Director
8	Client Story (MPL Program): From Bitter Challenges to a Sweet Success - <i>Gina De Chavez</i>
10	Client Story (GML Program): Sharing the Learning & Continuously Growing - <i>Melissa Ofalsa-Trinidad</i>
12	Client Story (AGL Program): Passing on the Passion - <i>Eduardo Manalili</i>
14	Scholar's Story: The Key to Reaching Her Dreams - <i>Mary Grace Ocampo</i>
16	Financial Performance
17	Operational Performance
18	Year-End Highlights
19	Year-In Review
22	Programs & Services for Partner-Clients
23	Programs & Services for Staff
24	Audited Financial Statements
32	Board Of Trustees
33	Management Team
34	Branch Directory
35	Partners & Affiliations



# CORPORATE IDEALS

## VISION

Communities enlightened by the love of God living in abundance, dignity, peace, and hope.

## MISSION

As a Christ-centered organization, we commit to serving communities by providing access to sustainable and inclusive developmental programs and services.

## CORE VALUES

- Love of God
- Innovativeness
- Good Governance
- Humility
- Transparency
- Integrity of Creation

# SOCIAL GOALS

- 01** Reaching target partner-clients: Men and women & their families
- 02** Meeting target partner-clients' needs: Providing quality financial and non-financial services
- 03** Change in target partner-clients' lives: Improving their well-being

# STRATEGIC DIRECTIONS

- Connect and work with people in sharing the goodness of Christ, promoting holistic transformation. **01**
- Serve the 125,000 partner clients, including micro entrepreneurs, growth-oriented enterprises, families of clients, farmers and fisher folks and the poorest of the poor. **02**
- Provide financial and non-financial products by improving quality portfolio, strengthen operational performance and ensure financial sustainability. **03**
- Provide capacity building programs for clients, staff, and board. **04**
- Enhance the application of microfinance principles, practices and professional development to tackle issues relating to poverty by mainstreaming social performance management. **05**
- Advocate environmental stewardship among clients and staff. **06**
- Develop strategic processes that places the organization as a compliant to the Microfinance (MF) law RA 10693. **07**



## THE LIGHT JOURNEY SO FAR

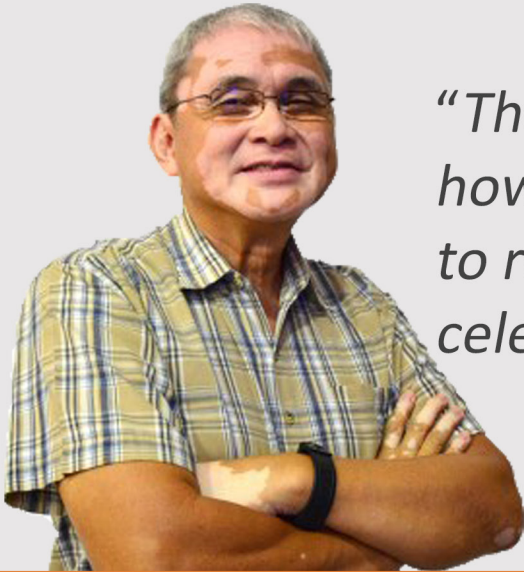
Change can be terrifying. But it is also through change that we get to accomplish a lot more than what we can only imagine. Author Joyce Meyer once said, “Anytime we step boldly to make changes, we take a chance that we might fail. But the only way to get better is to try.” Yes, not only is change terrifying, but it is also not a walk in the park, for failure can be the result of change gone wrong. The only way on how we can assure that we’re on the right path is if we, as one organization, follow the LIGHT that is Christ leading to the intended destination which will make the difficult journey worth it.

LIGHT (Lead with Integrity and Good Governance in Helping Communities for Holistic Transformation) Microfinance, Inc., was officially registered at the Securities and Exchange Commission on October 27, 2015 as God’s way of preserving His ministry in nation building thru poverty alleviation as initially established 29 years ago. LIGHT has dawned on the individuals called by God to perpetuate the original vision and mission of the organization after experiencing two consecutive corporate disputes. The second wave of dispute provided the minority of the board of trustees to stand for what is appropriate and exercised their duties and responsibilities to protect the welfare and interest of its staff and partner-clients.

The establishment of the new entity paved way for the new board, management, and staff to renew their commitment, stay true to the Lord’s calling, and realize that we will never find our way without the LIGHT of Christ.

Jesus said, “I am the Light of the world” because He is one with the Father, comes from the Father, and speaks for the Father; and it is only through Him that we can ever find and have the true light. We all have to accept Him as our Personal Lord and Savior and walk closely with Him so that we can make Him known and have His light illuminate to the communities we serve.

## MESSAGE OF THE PRESIDENT



*“The Lord wants us all to remember how we have overcome challenges, to remember our victories and celebrate to them.”*

- Fr. Eddie T. Panlilio, Chairman & President/CEO

Although we can all agree that this year has been a challenging one, we also cannot deny the fact that we have learned a lot from it; for without the challenges and changes we've had to go through, we wouldn't be able to come up with new strategies, programs, and services, which can help improve how we serve our partner-clients and, most especially, the Lord.

For our financial services, we have lowered the loan interest rate to 3%, opened the doors of our loan program to male partner-clients, and started the study for the LIGHT Loan Program which will give 0% interest to the marginalized sector.

For our non-financial services, we have developed thematic modules to be used in the devotions during cluster meetings and daily corporate devotions, shifted from Mass Wedding events to Renewal of Marriage Vows to re-orient our partner-clients about the biblical principles of marriage, and other activities such as the Parenting Session and Balik Blessing Program. We have also partnered with PhilHealth for the iGroup program and, for the year 2016, we have accepted 53 LIGHT scholars to further help our partner-clients and their families.

We should never forget what God has done for us. The Lord wants us all to remember how we have overcome challenges, to remember our victories, and celebrate to them. 16 times in Deuteronomy the word remember or remembrance appears. Not only in Deuteronomy, but the whole Bible is a book about remembrance. Much of the Scriptures is to get us to remember. The word “selah” is used in Psalms and Habakkuk some 74 times, and the purpose of it is to get one to pause and consider what was just said. Let us all take time to pause and remember the Lord's greatness.

You see, we are not here to just merely work, earn, and put bread on the table. We are all called upon by the Lord to be with the organization as part of His great plan for us. And because we have been hand-picked by the Lord to be here, part of our mission should be to initiate and encourage others to follow the LIGHT of Jesus (John 8:12) and help illuminate it to our families, co-workers, and communities we serve.

All Praises and Glory to Him!

A handwritten signature in black ink, appearing to read 'E. Panlilio'.

Fr. Eddie T. Panlilio  
Chairman & President/CEO

## MESSAGE OF THE EXECUTIVE DIRECTOR

*“ It was only through God’s grace and faithfulness that we were able to overcome everything...”*

- Concepcion B. Parantar, Executive Director



The year 2016 is a testimony of the Lord’s faithfulness!

Since the establishment of LIGHT in 2015, the organization has gone through a turbulent journey. It was only through God’s grace and faithfulness that we were able to overcome everything and still be able to continue to advance the Lord’s ministry in Kingdom and nation building through poverty alleviation.

Our one-year journey is indeed worth celebrating as we bring back all the glory and praises to Him who carried us through the ups and downs. He traversed the way ahead of us so that we can embrace various changes and dynamics – ultimately so that His agenda will be fulfilled. The Lord has put that unstoppable force in our hearts to rise above challenges.

Where we are today is a manifestation that we have a God who answers our prayers. Our organizational risk appetite went so high that we implemented various reforms such as providing innovative and relevant programs and services both for the staff and partner-clients. May the richness of our experiences, upon seeing the deliverance of God, always remind us that this journey is about Jesus and that we will

always be dependent upon Him, for the horse is made ready for the day of battle, but victory belongs to the Lord.

The Lord will entrust us with more souls if we remain faithful to His calling. When all is said and done, only what the Lord has done through us will really matter. The best thing that could ever happen in life is to have a deeper and growing relationship daily with Jesus who is the LIGHT- we are to #LOVETHELIGHT; for he who walks with Him shall not walk in darkness.

It’s time that we step out of the darkness and love the LIGHT that’s been given to us by the Lord and may He finds us faithful as we respond to His call.

LIGHT will continue to be a light, if it exists for others. *“In the same way, let your light shine before others, so that they may see your good works and give glory to your Father who is in heaven.”* Matthew 5:16

To God be all the Glory!

A handwritten signature in black ink, appearing to read 'Concepcion B. Parantar'. The signature is fluid and cursive.

Concepcion B. Parantar  
Executive Director

A woman with long brown hair, wearing a white t-shirt, is smiling warmly at the camera. She is holding two clear plastic trays filled with colorful, round candies. The tray in her left hand contains pink candies, while the tray in her right hand contains a mix of yellow, blue, green, and red candies. In the background, there are several more trays of candies on a table, and a religious poster with the text "GODS BLESSING" is visible on the wall.

# FROM BITTER CHALLENGES TO A SWEET SUCCESS

*Gina De Chavez*



A sweet and humble beginning – that could be the perfect description to how Gina De Chavez rose from being a 6th grade graduate to one of the successful entrepreneurs of LIGHT under its Multi-Purpose Loan (MPL) Program in Lipa City, Batangas.

Gina and her elder brother had to give up studying at an early age to work and help out in their household expenses. For years, she worked as a seamstress and her brother as a jewelry maker to support the needs of their family, including paying for the education of their younger siblings. The best thing about Gina is that “quitting” seems to have been deleted off of her vocabulary. She did not let her educational attainment get in the way of her dreams. She wanted to take their family out of poverty, and so she did.

In 1997, Gina started making yema after finding out that it’s been in demand and a lot of sellers are looking for more suppliers of the said candy. She learned the process of making “hard yema” from her neighbors, and her clientele slowly grew as years go by. It was in 2011 when she first found out about microenterprise development organizations. She became one of the organization’s partner-clients under the Group Loan Program, which is now enhanced and renamed as the Multi-Purpose Loan Program.

Through the loans she received from the organization, she was able to slowly expand her business and even had sales agents reaching up north to Isabela! However, just like most

businesses, hers didn’t grow without experiencing challenges along the way. The sales agents she trusted to market her candies ran off with approximately Php 120,000.00 in payables. But the good thing is, she did not see this as a boulder to stop her from reaching her dreams; instead, she looked at it as a challenge to overcome and learn from. And true enough, through the grace of God, Gina was able to overcome the challenge and is now on her 13th loan cycle with LIGHT with a loan amounting to Php 50,000.00 under the MPL Program.

After a few years, Gina’s candy manufacturing business became a big hit! She has now 20 employees and has expanded her products to other sweets such as pastillas and pasti-mallows, which even come in different flavors. Aside from that, she opened up a sari-sari store and bought two new tricycles as additional sources of income. She was also able to have a new house built for her and her family and own a new SUV (Sports Utility Vehicle).

Gina is an epitome of a good daughter and provider for her family. As an entrepreneur, she is one who takes advantage of every opportunity that comes her way and she never fails to give back through teaching other people in her community how to make her very in-demand candies. She is forever grateful to God, not just for the material blessings, but most especially for the family she has and relationships built with people in and out of the business.



SHARING THE LEARNING  
AND CONTINUOUSLY GROWING

*Melissa Ofalsa-Trinidad*

Being a mother is not an easy job; more so if you had to do it at an early age. Melissa Ofalsa-Trinidad, one of LIGHT's partner-clients under the Growth-Oriented Microenterprise Loan (GML) Program, married her husband at an early age and had to mature fast so she can perform her duties well as a wife and as a mother.

Even at the beginning of their relationship, Melissa and her husband have decided to be partners, not just in the household responsibilities, but also in putting bread on the table. Melissa tends their lot full of fruit-bearing trees and vegetables and peddles it in their neighborhood. And on the side, the couple was already engaged in backyard piggery as the lot they inherited from Mhel's, Melissa's husband, parents was big enough for the business and it was initially far from the residential areas.

In 1991, their lot became part of a would-be developed subdivision in Loma De Gato, Marilao, Bulacan. It was a struggle at first because they had to give up a part of their land, but the couple managed to make things work so they were still able to continue on with their hog raising business, which has expanded to including goats and cows. Aside from that, they also explored backyard slaughtering and eventually invested Php 20,000.00 in 1997 to start a lechon or pig roasting business. "It was a slow start, but eventually through word-of-mouth, we were able to develop a steady growing number of clients," Melissa gladly shared.

To help them further expand their business, Melissa joined LIGHT as one of the beneficiaries of the MPL Program for 6 years. And because LIGHT has seen her potential as an entrepreneur, paired with her hard work and willingness to learn more, the organization granted her entry to the Growth-Ori-

ented Microenterprise Loan (GML) Program. Her most recent loan, amounting to Php 150,000.00, was maximized to continually sustain the demand for lechon, in and out of season. They have also expanded the housing of their hogs to accommodate 30 sows and 30 fatteners.

Melissa currently has 5 regular employees, mostly out-of-school youths, who receive monthly allowance and free lodging and meals. Aside from that, she also offers them a chance to go back to school if they'd want to. She also hires people within their neighborhood and those referred by distant relatives who are really eager to have a decent job to be able to provide for their family. She firmly believes that it is just right to give chance to those who truly have the desire to help themselves so that in the future, when given the opportunity, they can also help other people in getting out of poverty. Aside from the financial assistance Melissa receives from LIGHT, she further shares how she appreciates the trainings provided by the organization especially the one in partnership with Bayan Academy. She learned the basics in procurement of supplies and deliveries, record keeping, and increasing her business acumen.

As Melissa continued on with her story, she can't help but be emotional as she shared the struggles she encountered to get to where she is right now. She started out as a young wife and mother and an entrepreneur at the same time, coping with the demands of the business without any formal education about how to run such. And look where she is right now! But despite of how far she has already gone, she still remained kind and humble knowing she still has a lot to learn and improve as she moves forward together with her business, family, and most especially, the Lord.



# PASSING ON THE PASSION

*Eduardo Manalili*

One of the growing problems of our country is that we are slowly running out of farmers. According to a study done by the Department of Agriculture back in 2011, the standard age of the country's farmers is 57 years old and their children do not see agriculture as a thriving profession based on what they've witnessed from their parents when they were growing up.

That is why it came as a surprise when Eduardo Manalili, one of LIGHT's partner-clients under its Agri-Loan Program, told us how his son is also passionate with agriculture and plans to continue helping out with farming their hectares of land in La Paz, Tarlac City. Even though his son finished a two-year vocational course, he was able to inherit Eduardo's passion and dedication for the business.

Growing up in a family of farmers and inheriting hectares of agricultural land, Eduardo was able to develop the passion and master the craft of farming. He sees farming as a noble job and considers his most productive days spent in the farm.

Initially, it was his wife who started out as the organization's partner-client under the MPL (Multi-Purpose Loan) Program, but when Agri-Loan was offered in Tarlac, they have decided to take advantage of a more specific program for farmers as it will open more doors of opportunities that will help them in cultivating and enhancing their farming business. He had his 1st cycle loan in October 2013 during the 2nd cropping and currently, he is on his 7th loan at Php 50,000.00. The loans he received from LIGHT were all used as working capital in his farm. This will usually include fertilizer as part of the inputs, gasoline for the equipment in plowing, and payment for labor

during land preparation and harvest period.

Eduardo also shared some of the challenges he had to face in his farming business. There would be times when group of farmers would approach him during the land preparation to help with the labor, but when he cannot provide for the initial payment, they would usually go to bigger land owners. As a result, he would sometimes experience difficulties in tilling his land, thus affecting his next loan cycle. He also mentioned the time his crops were totally damaged because of the torrential rains that caused heavy flooding. However, he was still thankful that he received financial assistance from PCIC (Philippine Crop Insurance Corporation), through being one of LIGHT's partner-clients.

LIGHT's Agri-Loan Program has been a big help to Eduardo and his family. Not only did it help them continue tilling their land, but it has also paved ways to providing income to other farmers and their families by giving them with work during preparation and harvest period. Eduardo also proudly shared that through the income in his farming business, he was able to have their house renovated, and purchase a second-hand Toyota Lite Ace to be used in hauling fertilizer among others and two carabaos to help him in the farm.

True enough, the success of Eduardo's farming business is not just through the help that LIGHT provides. A big part of it is because of his hard work and passion for the craft and in helping cultivate the farming industry in our country. With people like him and his family, we can finally see a spark of hope to the future of Agriculture in the Philippines.

A portrait of a young woman with long, dark hair, smiling warmly. She is wearing a light blue t-shirt with a graphic design. The background is a rustic, cluttered interior with wooden shelves and various items. An orange banner is overlaid at the bottom left of the image.

# THE KEY TO REACHING HER DREAMS

*Mary Grace Ocampo*

It is said that education is one of the most important gifts the parents can give their children. Even 2001 Nobel Peace Prize recipient and seventh Secretary-General of the United Nations, Kofi Annan, once said that, "Education is the premise of progress, in every society, in every family." That is why it is not a surprise that a lot of parents strive hard to send their children to school and finish their studies. But good education does not come cheap; so Mary Grace Ocampo, one of the recipients of the LIGHT Scholarship Program, is not only thankful to her parents, but also to LIGHT for providing her with the opportunity to get to a good school and continue on to reaching her dreams.

Mary Grace is the second to the eldest among 3 siblings. She grew up in Guagua, Pampanga and her mother is currently the breadwinner of their family, as her father had to stop working due to a lung ailment that limited his employment opportunities. Her eldest sibling is also currently in college and works as a crew in a Jollibee branch in Guagua to help support his studies, while her youngest sibling is in the 11th grade. Her mother has been one of the partner-clients of LIGHT for 5 years now under the MPL Program. Her sources of income is through being a laundry woman and selling detergent soap.

"I believe that education will be the key to helping and supporting my family in the future," Mary Grace shared. She is currently taking up BS Accountancy at the Don Honorio Ventura Technological State University (DHVTSU), and she has to take a qualifying examination every year to assess whether she can still pursue the course the next year or not. Through hard work and persistence, coupled with prayer, she is able to continue taking the course and is on her 3rd year now. She is thankful to LIGHT for helping her pursue her studies and even shared her plans on applying for a job with the organization in the future. She continued on with how it's not just to show her gratitude, but also it's her way of giving back to the communities and be part of another person's journey to reaching his/her dreams.

In the meantime, Mary Grace wants to study hard and pursue her dream of finishing BS Accountancy in five years so she can then take the CPA review and board exam. She firmly believes that being poor is not a hindrance to pursue her dreams, but rather she takes each day with gratefulness to the Lord and gets inspiration from her family to dream high, soar higher to reach her goals.

## FINANCIAL PERFORMANCE

### INDICATORS

	2016	2015
Operational Income	Php 166,200,000	Php 14,600,000
Asset	Php 938,088,000	Php 259,075,000
Liability	Php 797,500,000	Php 174,029,000
Fund Balance	Php 141,038,000	Php 14,054,000

### RATIOS

#### INDICATORS

	2016	2015
Operational Self-Sustainability	142 %	15.86%
CBU to Outstanding Loan Ratio	46%	31%
LR to Total Assets	81%	47%
Current Ratio	2:1	2.10:1
Debt to Equity Ratio	5.64:1	-18.86:1

\*2015 only covers seven branches



# OPERATIONAL PERFORMANCE



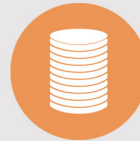
(2016) 117,698  
**CLIENT OUTREACH**  
(2015) 18,609



(2016) PHP 758.03M  
**LOAN PORTFOLIO**  
(2015) PHP 122.57M



(2016) PHP 2.86B  
**TOTAL AMOUNT DISBURSED**  
(2015) PHP 453M



(2016) PHP 6,057.28  
**AVERAGE LOAN SIZE**  
(2015) PHP 12,720.86



(2016) 7.42%  
**PORTFOLIO-AT-RISK**  
(2015) 10.27%



(2016) PHP 346.3M  
**CAPITAL BUILD-UP**  
(2015) PHP 38.31M



(2016) 49  
**NUMBER OF BRANCHES**  
(2015) 7



(2016) 6,388  
**NUMBER OF CLUSTERS**  
(2015) 968

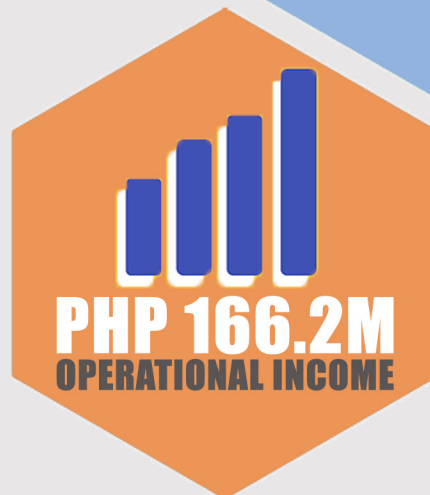


(2016) 510  
**NUMBER OF LOAN OFFICERS,  
ACCOUNT OFFICERS, AND  
AGRI-SPECIALISTS**  
(2015) 78



(2016) 820  
**TOTAL NUMBER OF STAFF**  
(2015) 167

# YEAR-END HIGHLIGHTS



## BRANCH OFFICE DEDICATION

### BRANCH OFFICE DEDICATION

All 49 branches successfully held their branch dedication for the year 2016.



## STAFF DEVELOPMENT



### LIGHT Leadership Development Program

The Branch Managers' Conference and Branch Accountants' Conference were organized to provide progressive equipping interventions to the organization's stakeholders (Board Of Trustees, Staff, Partner-Clients, and Partner-Mentors)



### On-Boarding Training Program

The On-Boarding Training Program was organized to create awareness and ownership to the organizational goals and values, and awareness and compliance to LIGHT's code of conduct.



### Annual Retreat and First Anniversary Celebration

LIGHT held its first Annual Retreat and First Anniversary Celebration titled, #LOVETHELIGHT, on October 27-29, 2016 at the Crown Legacy Hotel in Baguio City.

## EMPLOYEE RELATIONS

### ANNUAL SUMMER OUTING



A summer outing per area was organized to promote camaraderie, help battle stress, and improve productivity among the staff.

### TREE PLANTING ACTIVITY



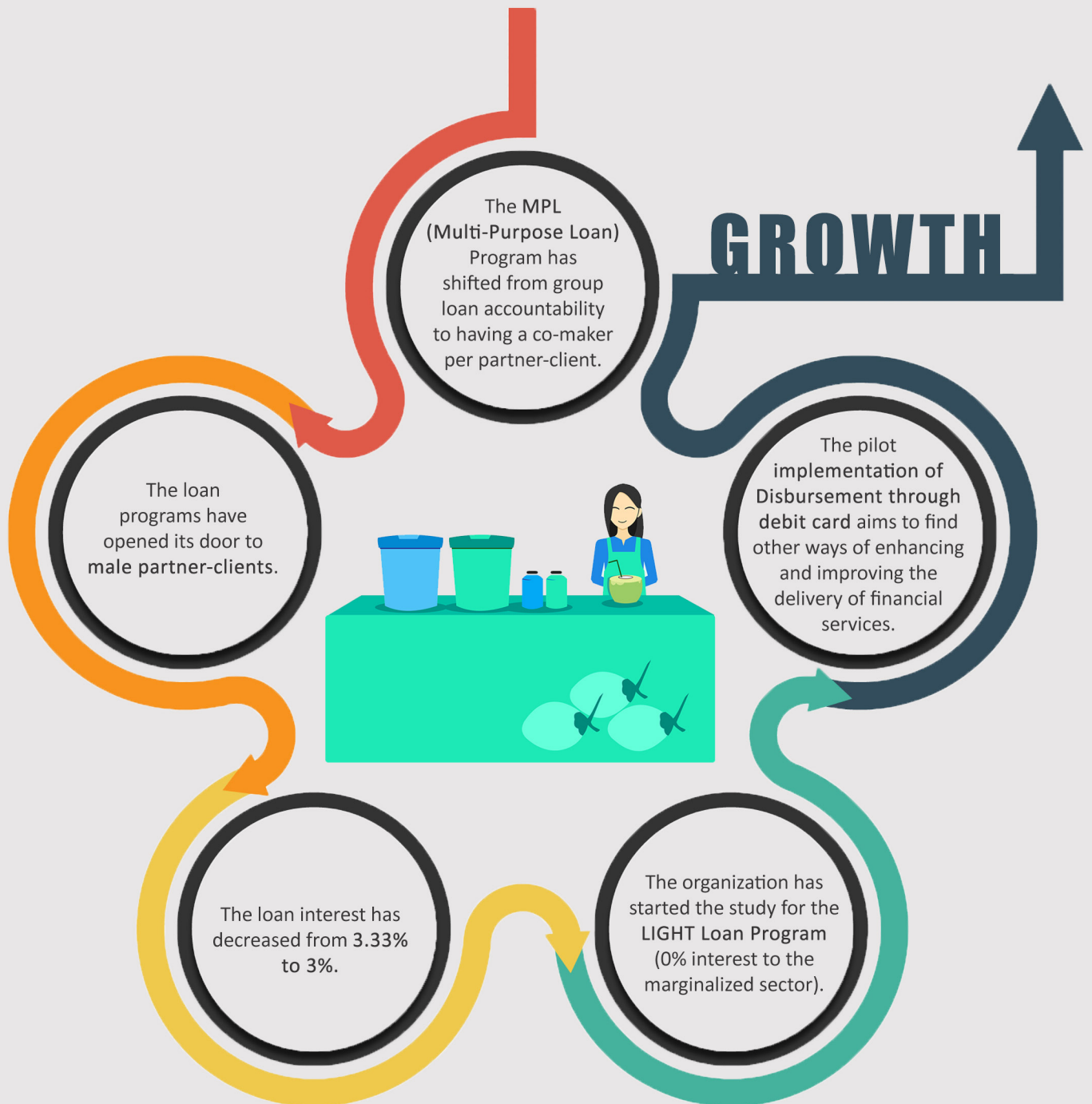
LIGHT joined the City-Wide Tree Planting Activity organized by the Natural Resource Office of San Fernando, Pampanga on June 25, 2016.

### ESTABLISHMENT OF LIGHT EMPLOYEES' CREDIT COOPERATIVE (LECC)



The organization has seen the importance of putting up an employees' cooperative to respond to the financial needs of the members with discipline on periodic savings through mutual and cooperative assistance.

FINANCIAL SERVICES



## NON-FINANCIAL SERVICES

### IMPLEMENTATION OF iGROUP



Partner-clients are encouraged to be PhilHealth members to help lighten their financial burden brought by various health vulnerabilities.

### LIGHT SCHOLARSHIP PROGRAM



In 2016, the LIGHT Scholarship Program has granted financial assistance to 53 deserving students of low-income families.

### THEMATIC MODULE



Themed monthly module for values formation was used during the daily corporate devotions and weekly cluster meetings.

### DISASTER RELIEF ASSISTANCE



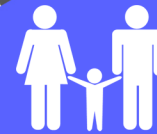
In 2016, LIGHT was able to provide assistance to 3,744 partner-clients amounting to Php 1,353,895.00.



2,243 partner-clients received low cost testing packages from King of King's Laboratory followed by a free consultation and medicines.



725 Beneficiaries from 5 chosen communities were provided assistance through this program.



1,796 partner-clients participated in the parenting session facilitated by LIGHT's partner-mentors.

### MEDICAL MISSION

### LIGHT OPERATION BALIK BLESSING PROGRAM

### PARENTING SESSION

### MARRIAGE ENCOUNTER



34 couples renewed their vows as they were re-oriented to the biblical concepts of marriage, facilitated by LIGHT's partner-mentors.



### KITCHEN BATTLE

13 branches participated in the Kitchen Battle to promote awareness on indigenous food.

# PROGRAMS & SERVICES (FOR PARTNER-CLIENTS)

## MULTI-PURPOSE LOAN

A flexible microfinance product used for growth & expansion of microenterprise, for education, for housing, for asset acquisition, etc.



## FINANCIAL LITERACY

The program aims to raise the level of awareness of LIGHT's partner-clients with regard to proper financial management in their enterprise and household.



## GROWTH-ORIENTED MICROENTERPRISE LOAN

An individual loan for the growth and expansion of the microenterprise sector. This is usually awarded to graduates of the MPL program.



## HEALTH & NUTRITION PROGRAM

The program focuses on educating and raising awareness about practical knowledge of keeping a healthy physical body to its partner-clients and staff.



## AGRI-LOAN

An individual agriculture production loan to empower and assist income rice farming households.



## COMMUNITY DEVELOPMENT PROGRAM

With 41 beneficiaries under CCFA (Carolina Community Farmers' Association) in Naga City, LIGHT aims to help them get out of poverty by properly managing & maximizing their resources.



## VALUES FORMATION

The organization facilitates various activities that will introduce the staff and partner-clients to the Word of God, illuminating the love of Christ to everyone.



## FAMILY LIFE PROGRAM

This program is focused on helping families improve their relationship with Christ & with each other which meets their unique individual needs.



## LIGHT SCHOLARSHIP PROGRAM

The program provides scholarship grants to deserving children of low-income families and also aims to provide spiritual nurturing for the scholars and their families.



## DISASTER RISK & REDUCTION MANAGEMENT

The program aims to provide awareness on the risk mitigation in case of disasters through lectures and drills. LIGHT also provides relief assistance to its partner-clients and staff affected by calamities.



# PROGRAMS & SERVICES (FOR STAFF)



## ENHANCED HMO COVERAGE

In 2016, LIGHT spent Php7,837,638.28 for the Health Maintenance Organization (HMO) coverage of all its regular employees. The enhanced coverage included dental services of permanent lightcure fillings for up to 4 teeth, maternity reimbursement of up to Php 5,000.00, and an executive check-up up to 6 slots.



## BASIC LIFE & ACCIDENT INSURANCE

In 2016, LIGHT has spent Php 1,779,322.56 to provide its staff with a life and accident insurance coverage up to Php 1,000,000.00 each. This is in partnership with Pioneer Insurance.



## PROVISION FOR COMPANY UNIFORM

To help promote pride and responsibility at work, LIGHT provided its staff with company uniforms, thus helping them become more than just staff, but also as brand ambassadors of the organization inside and outside of the workplace.

LEAD WITH INTEGRITY AND GOOD GOVERNANCE  
IN HELPING COMMUNITIES FOR HOLISTIC  
TRANSFORMATION (LIGHT) MICROFINANCE, INC.

AUDITED FINANCIAL STATEMENTS

December 31, 2016



## **The Board of Trustees**

### **LEAD WITH INTEGRITY AND GOOD GOVERNANCE IN HELPING**

### **COMMUNITIES FOR HOLISTIC TRANSFORMATION (LIGHT) MICROFINANCE, INC.**

Lot 1-A Greenville Subd., Brgy. San Jose City of San Fernando, Pampanga 2000

## **Report on the Audit of the Financial Statements**

### *Opinion*

I have audited the financial statements of **LEAD WITH INTEGRITY AND GOOD GOVERNANCE IN HELPING COMMUNITIES FOR HOLISTIC TRANSFORMATION (LIGHT) MICROFINANCE, INC.**, which comprise the statements of financial position as at December 31, 2016, and the statements of financial performance, statements of changes in equity and statements of cash flows for the years then ended, and notes to the financial statements, including a summary of significant accounting policies. The financial statements of the company as of December 31, 2015, were audited by another auditor whose report dated April 14, 2016, expressed an unqualified opinion on those statements.

In my opinion, the accompanying financial statements present fairly, in all material respects, the financial position of the Company as at December 31, 2016 and 2015, and its financial performance and its cash flows for the years then ended in accordance with Philippine Financial Reporting Standard.

### *Basis for Opinion*

I conducted my audits in accordance with Philippine Standards on Auditing (PSA). My responsibilities under those standards are further described in the Auditor's Responsibilities for the Audit of the Financial Statements section of my report. I am independent of the Company in accordance with the ethical requirements that are relevant to my audit of the financial statements in the Philippines, the Code of Ethics for Professional Accountants in the Philippines, and I have fulfilled my other ethical responsibilities in accordance with these requirements. I believe that the audit evidence I have obtained is sufficient and appropriate to provide a basis for our opinion.

### *Responsibilities of Management and Those Charged with Governance for the Financial Statements*

Management is responsible for the preparation and fair presentation of the financial statements in accordance with PFRS, and for such internal control as management determines is necessary to enable the preparation of financial statements that are free from material misstatement, whether due to fraud or error.

In preparing the financial statements, management is responsible for assessing the Company's ability to continue as a going concern, disclosing, as applicable, matters related to going concern and using the going concern basis of accounting unless management either intends to liquidate the Company or to cease operations, or has no realistic alternative but to do so.

Those charged with governance are responsible for overseeing the Company's financial reporting process.

### *Auditor's Responsibilities for the Audit of the Financial Statements*

My objectives are to obtain reasonable assurance about whether the financial statements as a whole are free from material misstatement, whether due to fraud or error, and to issue an auditors' report that includes our opinion. Reasonable assurance is a high level of assurance, but is not a guarantee that an audit conducted in accordance with PSA will always detect a material misstatement when it exists. Misstatements can arise from fraud or error and are considered material if, individually or in the aggregate, they could reasonably be expected to influence the economic decisions of users taken on the basis of these financial statements.

As part of an audit in accordance with PSA, I exercise professional judgment and maintain professional skepticism throughout the audit. I also:

- Identify and assess the risks of material misstatement of the financial statements, whether due to fraud or error, design and perform audit procedures responsive to those risks, and obtain audit evidence that is sufficient and appropriate to provide a basis for my opinion. The risk of not detecting a material misstatement resulting from fraud is higher than for one resulting from error, as fraud may involve collusion, forgery, intentional omissions, misrepresentations, or the override of internal control.
- Obtain an understanding of internal control relevant to the audit in order to design audit procedures that are appropriate in the circumstances, but not for the purpose of expressing an opinion on the effectiveness of the Company's internal control.
- Evaluate the appropriateness of accounting policies used and the reasonableness of accounting estimates and related disclosures made by management.
- Conclude on the appropriateness of management's use of the going concern basis of accounting and, based on the audit evidence obtained, whether a material uncertainty exists related to events or conditions that may cast significant doubt on the Company's ability to continue as a going concern. If I conclude that a material uncertainty exists, I am required to draw attention in my auditor's report to the related disclosures in the financial statements or, if such disclosures are inadequate, to modify my opinion. My conclusions are based on the audit evidence obtained up to the date of our auditors' report. However, future events or conditions may cause the Company to cease to continue as a going concern.
- Evaluate the overall presentation, structure and content of the financial statements, including the disclosures, and whether the financial statements represent the underlying transactions and events in a manner that achieves fair presentation.

I communicate with those charged with governance regarding, among other matters, the planned scope and timing of the audit and significant audit findings, including any significant deficiencies in internal control that I identify during my audit.

### **Report on Other Legal and Regulatory Requirements**

My audits were conducted for the purpose of forming an opinion on the basic financial statements taken as a whole. The supplementary information for the year ended December 31, 2016 required by the Bureau of Internal Revenue as disclosed in Note 26 to the financial statements is presented for purposes of additional analysis and is not a required part of the basic financial statements prepared in accordance with PFRS for SMEs. Such supplementary information is the responsibility of management. The supplementary information has been subjected to the auditing procedures applied in the audit of the basic financial statements and, in my opinion, is fairly stated in all material respects in relation to the basic financial statements taken as a whole.

EDITHA C. DELA CRUZ  
CERTIFIED PUBLIC ACCOUNTANT  
CPA License No. 57014  
BOA Accreditation No. 0623 valid until December 31, 2018  
BIR Accreditation No. 05-002114-1-2015 valid until February 09, 2018  
PTR No. 7391719 issued on January 03, 2017 at Baliwag, Bulacan  
TIN 115-661-526-000

July 19, 2017  
Baliuag, Bulacan  
26

LEAD WITH INTEGRITY AND GOOD GOVERNANCE IN HELPING  
COMMUNITIES FOR HOLISTIC TRANSFORMATION (LIGHT) MICROFINANCE, INC.  
(A Non-stock, Non-profit Corporation)  
CONSOLIDATED  
STATEMENT OF FINANCIAL POSITION  
DECEMBER 31, 2016 and 2015

ASSETS	2016	2015
<b>Current Assets</b>		
Cash & Cash Equivalents	P 32,180,190	P 21,010,876
Loan and Interest Receivables, Net	712,133,864	125,302,111
Non-Trade And Other Receivables, Net	147,513,806	105,906,741
Prepayments	3,296,989	208,220
Prepaid Taxes	3,564,041	-
Unissued Office Supplies	4,933,756	1,636,814
<b>Total Current Assets</b>	<b>903,622,645</b>	<b>254,064,762</b>
<b>Non-Current Assets</b>		
Property and equipment - net	30,068,654	2,588,471
Intangible Assets	66,390	2,116,051
Other Non-Current Assets	5,122,590	983,173
<b>Total Non - Current Assets</b>	<b>35,257,634</b>	<b>5,687,695</b>
<b>Total Assets</b>	<b>P 938,880,279</b>	<b>P 259,752,457</b>
<b>LIABILITIES AND FUNDS BALANCE</b>		
<b>Current Liabilities</b>		
Trade and Other Payables	P 98,941,370	P 64,821,279
Capital Build-Up	346,295,892	38,314,768
Due to other Microfinance Entity	6,332,348	18,131,159
<b>Total Current Liabilities</b>	<b>451,569,611</b>	<b>121,267,205</b>
<b>Non-Current Liabilities</b>		
Loans and Borrowings	11,931,301	-
Retirement Liability	18,849,302	13,535,968
Estimated Liability on Litigation	315,154,344	139,490,899
<b>Total Non-Current Liabilities</b>	<b>345,934,947</b>	<b>153,026,867</b>
<b>Total Liabilities</b>	<b>797,504,557</b>	<b>274,294,073</b>
<b>Fund Balance</b>		
Capital Contributions	1,000,000	55,000
Donations and Grants	2,000	-
Accumulated Earnings/Losses	140,373,721	(14,596,615)
<b>Total Capital Funds</b>	<b>141,375,721</b>	<b>(14,541,615)</b>
<b>Total Capital Fund Balance</b>	<b>P 938,880,279</b>	<b>P 259,752,457</b>

**LEAD WITH INTEGRITY AND GOOD GOVERNANCE IN HELPING  
COMMUNITIES FOR HOLISTIC TRANSFORMATION (LIGHT) MICROFINANCE, INC.**  
*(A Non-stock, Non-profit Corporation)*  
**CONSOLIDATED  
STATEMENT OF FINANCIAL PERFORMANCE  
DECEMBER 31, 2016 and 2015**

	<b>2016</b>		<b>2015</b>	
<b><i>Revenue from Microfinance Activities</i></b>				
Interest Income	P	495,725,391	P	2,450,191
Other Revenues from Microfinance Activities		65,736,007		268,646
Total Revenue from Operation		561,461,399		2,718,837
<b><i>Cost of Providing Microfinance Activities</i></b>		310,007,051		2,575,335
<b><i>Gross Profit</i></b>		251,454,347		143,502
<b><i>General and Administrative Expenses</i></b>		79,242,955		14,650,812
<b>Operating Profit</b>		172,211,392	(	14,507,310 )
<b><i>Finance Income (Cost)</i></b>				
Interest Income on Deposits		114,037		6,244
Interest Expense on Capital Build-Up	(	6,222,479 )	(	121,436 )
Interest Expense on Borrowings	(	394,478 )		-
<b><i>Other Non-Operating Income</i></b>				
Other Income		491,092		25,886.33
<b>Net Income (Loss) Before Tax</b>		166,199,565	(	14,596,615 )
Provision for Income Taxes		11,229,228		-
<b>Net Income (Loss) After Tax</b>	P	<b>154,970,337</b>	P	<b>14,596,615</b>

**LEAD WITH INTEGRITY AND GOOD GOVERNANCE IN HELPING  
COMMUNITIES FOR HOLISTIC TRANSFORMATION (LIGHT) MICROFINANCE, INC.**  
*(A Non-stock, Non-profit Corporation)*  
**CONSOLIDATED  
STATEMENT OF CASH FLOWS  
DECEMBER 31, 2016 and 2015**

	<b>2016</b>	<b>2015</b>
<b><i>Cash Flows From Operating Activities</i></b>		
Profit (Loss) before tax	P 166,199,565	(P 14,596,615 )
<i>Adjustments for:</i>		
Interest expense on borrowings	394,478	-
Interest expense on Capital Build-Up	6,222,479	121,436
Interest Income on deposits	( 114,037 )	( 6,244 )
Retirement Expense	5,313,333	330,302
Pre-Operating Cost	2,078,661	-
Depreciation Expense	6,255,352	287,328
<b><i>Operating loss before changes in operating resources and liabilities</i></b>	<b>186,349,830</b>	<b>( 13,863,793 )</b>
Decrease (increase) in loan and interest receivable	( 586,831,753)	2,049,532
Decrease (increase) in non-trade and other receivables	( 41,607,064)	( 46,616,468 )
Decrease (increase) in prepayments and other current assets	( 3,088,769)	2,026,312
Decrease (increase) in Unused Office Supplies	( 3,296,942 )	1,465,534
Increase (decrease) in trade and other payables	34,120,091	35,126,260
Increase (decrease) in Capital Build-Up	307,981,124	( 124,000)
Increase (decrease) in due to other microfinance entity	( 11,798,810)	18,131,159
Cash generated from (used in) operations	( 118,172,292)	( 4,736,332 )
Cash received from interest income	114,037	6,244
Cash paid for interest expense	( 6,616,957 )	( 121,436 )
Cash paid for taxes	( 14,793,269 )	-
Net Cash From (Used in) Operating Activities	( 139,468,480 )	( 4,851,524 )

LEAD WITH INTEGRITY AND GOOD GOVERNANCE IN HELPING  
COMMUNITIES FOR HOLISTIC TRANSFORMATION (LIGHT) MICROFINANCE, INC.  
(A Non-stock, Non-profit Corporation)  
CONSOLIDATED  
STATEMENT OF CASH FLOWS  
DECEMBER 31, 2016 and 2015

	2016	2015
<b><i>Cash Flows From Investing Activities</i></b>		
Acquisition of properties and equipment	( 37,874,952 )	( 299,229 )
Acquisition/Sale of intangible assets	(29,000 )	( 550,202 )
Proceeds from disposal of office equipment	-	21,800
Net Cash From (Used in) Investing Activities	( 37,903,952 )	( 827,631 )
<b><i>Cash Flows From Financing Activities</i></b>		
Proceed from Loan	11,931,301	-
Capital Contributions	945,000	55,000.00
Grants and Donations	2,000	-
Increase in Estimated Liability on Litigation	175,663,445	6,280,070
Disputed cash take over for safekeeping	-	20,354,961
Net Cash From (Used in) Investing Activities	188,541,746	26,690,031
<b><i>Net Increase (Decrease) in Cash and Cash Equivalents</i></b>	<b>11,169,314</b>	<b>21,010,876.07</b>
<b><i>Cash and Cash Equivalents at Beginning of Year</i></b>	<b>21,010,876</b>	
<b><i>Cash and Cash Equivalents at End of Year</i></b>	<b>P 32,180,190</b>	<b>P 21,010,876</b>

**LEAD WITH INTEGRITY AND GOOD GOVERNANCE IN HELPING  
COMMUNITIES FOR HOLISTIC TRANSFORMATION (LIGHT) MICROFINANCE, INC.  
(A Non-stock, Non-profit Corporation)  
CONSOLIDATED  
STATEMENT OF CHANGES IN FUND BALANCE  
DECEMBER 31, 2016 and 2015**

	CAPITAL CONTRIBUTION	DONATIONS AND GRANTS	ACCUMULATED EARNINGS	TOTAL FUND BALANCE
Balance at December 31, 2015	P 55,000	-	(P 14,596,615)	(P 14,541,615)
Additional Investments	945,000	-	-	945,000
Donations received during 2016	-	2,000		2,000
Net Income for the Year	-	-	154,970,337	154,970,337
Balance at December 31, 2016	P 1,000,000	P 2,000	P 140,373,721	P 141,375,721
Balance at October 27, 2015	P 55,000	-	-	P 55,000
Additional Investments	-	-	-	-
Donations received during 2015	-	-	-	-
Net Income for the Year			( 14,596,615)	( 14,596,615)
Balance at December 31, 2015, As Restated.	P 55,000		( 14,596,615)	( 14,541,615)

# BOARD OF TRUSTEES



**EDDIE T. PANLILIO**  
Chairman & President/CEO



**NOEL B. ALIPIO**  
Vice Chairman & Corporate Treasurer



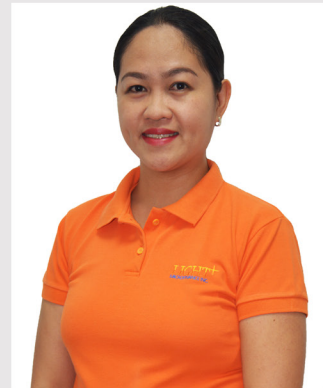
**ATTY. ANTONIO P. JAMON, JR.**  
Corporate Secretary



**PTRA. EDITH D. PINEDA**  
Member



**CONCEPCION B. PARANTAR**  
Vice President, COO, & Executive Director



**GRACE D. BAUTISTA**  
Member, Operations Director



**PERRY P. PAZ**  
Member, Institutional Support Group Director



# MANAGEMENT TEAM



**GIRLIE M. TERING-TERING**  
North Luzon Operations Manager



**MICHEL M. ANZANO**  
South Luzon Operations Manager



**IAN MARK B. VILLACRUZ**  
VisMin Operations Manager



**MACARIO D. DE CASTRO, JR.**  
Administration Department Manager



**MARY GRACE B. CAMPANER**  
Human Resources Development Manager



**MARIA BELEN M. SISON**  
Client Services Group Manager



**GREGGY C. CANJA**  
Finance & Accounting Department Manager



**RICHARD C. DELOS SANTOS**  
Audit Department Manager

# BRANCH DIRECTORY

## NORTH LUZON

### ANGELES

2/F Casa Mitzi Bldg., Sto. Rosario St., Sto. Domingo Angeles City, Pampanga, 2009  
(045) 458-3162 | angeles@light.org.ph

### BALIWAG

2/F, Juzmag Building, Plaza Naning, Brgy. Poblacion, Baliwag, Bulacan, 3006  
(044) 798-0433 | baliwag@light.org.ph

### BINANGONAN

2/F 0161 National Road, Brgy. Palangoy, Binangonan, Rizal, 1940  
(02) 706-4716 | binangonan@light.org.ph

### CAPAS, TARLAC

2/F San Trope Bldg., Santo Domingo 1, Capas, Tarlac, 2315  
(045) 628-3878 | capas@light.org.ph

### DAGUPAN

2/F Assada Center, A.B. Fernandez Ave., Dagupan City, Pangasinan, 2400  
(075) 540-5741 | dagupan@light.org.ph

### GAPAN, NUEVA ECIJA

Unit 304 3/F Tsi Bldg. Bucana, Sto. Niño St., Gapan City, 3105  
(044) 951-1123 | gapan@light.org.ph

### GUAGUA

2/F Unity Bldg., Plaza Burgos, Guagua, Pampanga, 2003  
(045) 624-2541 | guagua@light.org.ph

### MALolos

1215 – A1 J&R Bldg., Mc-Arthur Highway,  
Sumapang Matanda, Malolos City Bulacan, 3000  
(044) 795-5877 | malolos@light.org.ph

### MARIKINA

2/F, Sisco Bldg., Sumulong Highway, Cor., M. Cruz St., Sto. Niño, Marikina City, 1820  
(02) 531-9853 | marikina@light.org.ph

### MEYCAUAYAN

2/F, Gm De Guzman Bldg., Malhacan Hiway, Meycauayan City, Bulacan, 3020  
(044) 693-3023 | meycauayan@light.org.ph

### PASIG

Unit 5, G/F #17, Rn Bldg., San Antonio, Shaw Blvd., Pasig City  
(02) 531-8809 | pasig@light.org.ph

### QUEZON CITY

Unit 2C & 2D New Domain Plaza 19, Holy Spirit Drive, Don Antonio Heights Quezon City  
(02) 962-4166 | quezoncity@light.org.ph

### SAN CARLOS

2/F, Ger-Nor Building, Martin Posadas Avenue, San Carlos City, Pangasinan, 2420  
(075) 633-4668 | sancarlos@light.org.ph

### SAN FERNANDO, LA UNION

2/F Shania Tower, Quezon Ave., Brgy. Sevilla, San Fernando City, La Union, 2500  
(072) 682-0972 | sanfernando@light.org.ph

### TARLAC

2/F Jnlb Bldg. Blk. 4 Juan Luna St. Sto. Cristo Tarlac City, 2300  
(045) 470-8090 | tarlac@light.org.ph

### TALavera, NUEVA ECIJA

2/F Mirador's Building Esguerra District, National Highway, Talavera, Nueva Ecija, 3114  
(044) 951-0136 | talavera@light.org.ph

### TUGUEGARAO

2/F Centennial Bldg., Corner Arellano & Blumentrit St.,  
Centro 9, Tuguegarao City, Cagayan, 3500  
(078) 396-2478 | tuguegarao@light.org.ph

### URDANETA

2/F S. Com. Bldg., Mc Arthur Hi-Way, Brgy. Nancayasan,  
Urdaneta City Pangasinan, 2428  
(075) 633-4671 | urdaneta@light.org.ph

### VALENZUELA

Unit 4-C Jatsco Bldg., General T. De Leon St., Karuhatan, Valenzuela City 1441  
(02) 277-7468 | valenzuela@light.org.ph

## SOUTH LUZON

### BALAYAN

3/F, EGM III Bldg., Paz St., Brgy. 7, Balayan, Batangas, 4213  
(043) 740-8844 | balayan@light.org.ph

### BATANGAS

2/F R & E Macatangay Building Apacible St., Brgy., 10 Batangas City, 4200  
(043) 727-4092 | batangas@light.org.ph

### BIÑAN

3/F 3A & 3B Raja Cordell Bldg., Blk. 4, Lot 1, Nepa National Highway,  
Brgy. San Vicente, City Of Biñan 4024  
(049) 511-3828 | binan@light.org.ph

### CALAMBA

2/F J. Alcasid Bldg., Business Center Brgy. Uno, Crossing, Calamba Laguna, 4027  
(049) 508-6427 | calamba@light.org.ph

### DAET

2/F Sto. Niño Commercial Centers, Dasmariñas St.,  
Brgy. VIII, Daet, Camarines Norte, 4600  
(054) 885-0592 | daet@light.org.ph

### DASMARIÑAS

3/F, Janjer Space For Rent, Aguinaldo Hiway, Zone 4,  
Poblacion, Dasmariñas City, Cavite, 4114  
(046) 435-0179 | dasma@light.org.ph

### GUMACA

2/F MAJT. Building, A. Bonifacio St., Brgy. Pipisik, Gumaca, Quezon, 4306  
(042) 717-4957 | gumaca@light.org.ph

### IMUS

551 Ucpb Bldg. Gen. Emilio Aguinaldo Hi-Way, Tanzang Luma 1, Imus City, Cavite, 4103  
(046) 437-8205 | imus@light.org.ph

### IRIGA

Door 206 2/F Everest Plaza, Hi-Way 1, San Miguel, Iriga City, Camarines Sur, 4431  
(054) 881-7668 | nabua@light.org.ph

### LEGAZPI

2/F 114 Ammin Holdings Bldg. Penaranda St. Oro Site, Legazpi City, Albay, 4500  
(052) 742-4631 | legazpi@light.org.ph

### LIPA

2/F Bibon's Auto Supply, #12 Kap-S Luz St., Lipa City, Batangas, 4217  
(043) 757-4874 | lipa@light.org.ph

### LUCENA

2/F Shierelane P. Lucero Bldg., 80 Quezon Avenue, Brgy. Ii, Lucena City, Quezon, 4301  
(042) 717-5817 | lucena@light.org.ph

### NAGA

Unit 102 G/F Galleria De San Francisco, Peñafrancia Avenue, Naga City, Camarines Sur,  
4400  
(054) 205-0624 | naga@light.org.ph

### PINAMALAYAN

1/F KV Homes Rentals Bldg., Madrid Blvd., Zone 2, Pinamalayan, Oriental Mindoro, 5208  
(043) 743-0005 | pinamalayan@light.org.ph

# PARTNERS & AFFILIATIONS

## PARAÑAQUE

2/F Fraltec Bldg. 8193 Dr. A. Santos Ave. Brgy. San Isidro, Parañaque City, 1700  
(02) 802-4516 | paranaque@light.org.ph

## PASAY

Rm 202 & 203, 2/F Cementina Bldg., 160 A. Arnaiz Ave. (Libertad) Corner,  
Cuenca Zone 9, Brgy. 69 Pasay City  
(02) 772-0316 | pasay@light.org.ph

## ROSARIO, CAVITE

3/F RRE Building B4, Lot 14, Costa Verde Subd.,  
Tejeros Convention, Rosario, Cavite, 4106  
(046) 472-7623 | rosario@light.org.ph

## SAN PABLO

2/F ACM Bldg., #57 Paseo Arsenio Escudero Corner MH Del Pilar St.,  
San Pablo City, 4000  
(049) 503-4706 | sanpablo@light.org.ph

## STA. CRUZ

2/F Laguna Goodyear Sales Center Building, Falcon St., Brgy. 5, Sta. Cruz, Laguna, 4009  
(049) 501-9441 | stacruz@light.org.ph

## VISAYAS & MINDANAO

### BUTUAN

2/F, Rufdy Tiu Bldg. 3, Montilla Blvd., Cor. Montilla St.,  
Butuan City, Agusan Del Norte, 8600  
(085) 815-3998 | butuan@light.org.ph

### CEBU SOUTH

2/F Dy Bldg., South National Highway, Bulacao, Talisay City, Cebu, 6045  
(032) 231-4818 | cebusouth@light.org.ph

### DAVAO

3/F Door 20 San Pedro Building, San Pedro St., Davao City, Davao Del Sur, 8000  
(082) 296-7528 | davao@light.org.ph

### GENERAL SANTOS

3/F #301 Rotunda Bldg., General Santos City, South Cotabato, 9500  
(083) 552-3573 | gensan@light.org.ph

### KABANKALAN

Door 7 & 8 2/F Artm Building, Jy Perez Memorial Highway,  
Brgy. 2 Kabankalan City, Negros Occidental, 6111  
(034) 441-9368 | kabankalan@light.org.ph

### LAPU-LAPU

3/F DCDB Bldg., M.L. Quezon Highway, Pusok, Lapu-Lapu City, Cebu, 6015  
(032) 261-7180 | lapulapu@light.org.ph

### ORMOC

2/F Avenido Building, San Pedro St., Ormoc City, Leyte, 6541  
(053) 832-3399 | ormoc@light.org.ph

### SILAY

2/F LSI Bldg., Juan Valencia St., Silay City 6116 (Washington St.,  
Brgy. 3), Negros Occidental, 6116  
(034) 458-4681 | silay@light.org.ph

### TACLOBAN

3/F Room A-304 F. Mendoza Commercial Complex,  
141 Sto. Niño St., Tacloban City, Leyte, 6500  
(053) 523-8139 | tacloban@light.org.ph

### TAGBILARAN

2/F Lim Limuel Building Belderol St., Cogon District, Tagbilaran City, Bohol, 6300  
(038) 411-1674 | tagbilaran@light.org.ph

### TAGUM

Zaragosa Bldg., Gante Road, Magugpo West, Tagum City, Davao Del Norte, 8100  
(084) 216-2769 | tagum@light.org.ph

## Bank of the Philippine Islands

Bicol Microfinance Council  
Incorporated (BMCI)

Center for Community  
Transformation (CCT)

China Banking Corporation

Country Bankers Life Insurance  
Corporation (CBLIC)

Daan Sa Pag-unlad, Inc. (DSPI)

East West Banking Corporation

EastWest Rural Bank

Intellicare (HMO Provider)

International Justice Mission (IJM)

King of Kings Laboratory

Mindanao Microfinance Council  
Incorporated (MMCI)

Oradian (Instafin)

Philippine Crop Insurance  
Corporation (PCIC)

Philippine Business Bank

Philippine National Bank

PhilHealth

Pioneer Insurance

Rangtay sa Pagrang-ay Microfinance, Inc. (RPMI)

Rizal Commercial Banking Corporation

Security Bank Corporation

Talete King Panyulung  
Kapampangan, Inc. Foundation  
(TPKIF)



**Lead with Integrity and Good Governance in Helping  
Communities for Holistic Transformation (LIGHT) Microfinance, Inc.**  
Lot 1-A, Greenville Subdivision, Brgy. San Jose,  
City of San Fernando, Pampanga, 2000